

# Regency Style Options



Amersham



Aylesbury



Bath



Cambridge



Canterbury



Cheltenham



Chester



Exeter



Gloucester



Hereford



Kensington



Oxford



Richmond



Salsbury



Stratford



Warwick



Windsor



Worcester

Available as a Firesafe FD30 fire rated doorset, please refer to the Firesafe data sheet

## GRP Composite Entrance Doorset

Regency

### Door Leaf

- Glass Reinforced Polyester (SMC) outer facing, nominal 3mm thickness
- Compression moulded laminated hardwood subframe
- Plastic edge capping on the vertical edge of the frame for superior aesthetics
- High density, thermally efficient closed cell, polystyrene core

### Glazing

- Unique patented FlushGlaze system without external cassettes
- Finished with a tough acrylic coating; silicone seals guarantee weather resistance
- 24mm double-glazed units, incorporating 4mm toughened and 6.4mm laminated glass
- BS EN 122150-1, BS EN 14449 and BS1279
- Laminated glass is standard for 'Secured by Design' doors
- Clear and obscure patterns are available



KM 95693  
BS8259 PAS 24 DOORS

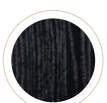
Secured by Design



Official Police Security Initiative



White



Black



Blue



Red



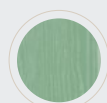
Green



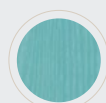
Dark Grey



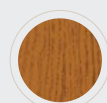
Pebble



Foly Green



Turquoise  
Pastel



Golden Oak



Rosewood

All doors are white on the inside as standard.

Please note colours shown are for guidance only due to the limitations of the media.

Newent Business Park, Newent, Gloucestershire, GL18 1DZ

T +44 (0) 1531 822 585 F +44 (0) 1531 822 586

[www.systembuildingproducts.com](http://www.systembuildingproducts.com)

**Britdoors**  
By **System'**